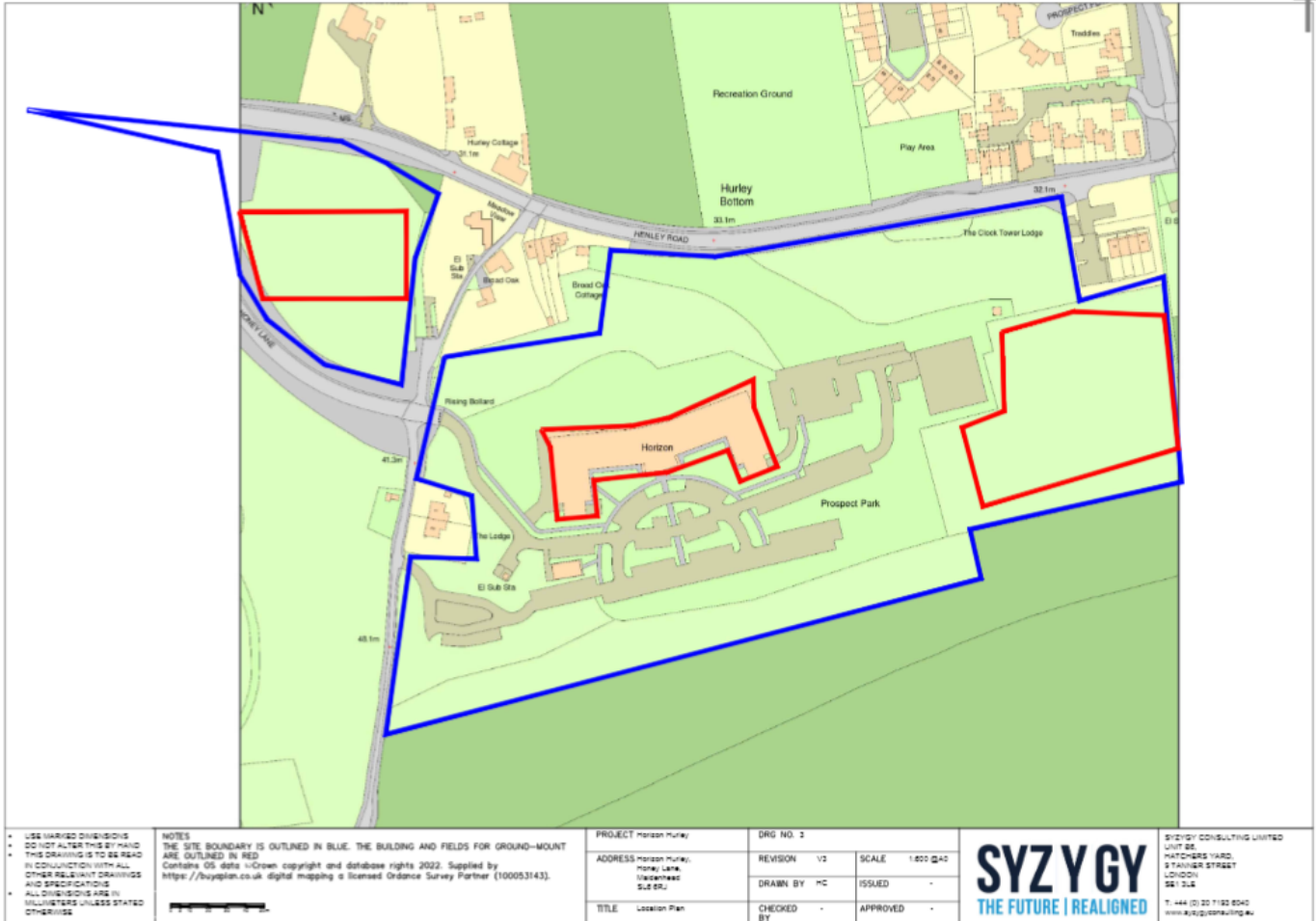


Appendix A - 22/02095/FULL : Horizon, Honey Lane, Maidenhead

Location Plan



- USE SHARPER DIVISIONS
- DO NOT ALTER THIS BY HAND
- THIS DRAWING IS TO BE READ IN CONJUNCTION WITH ALL OTHER RELEVANT DRAWINGS AND SPECIFICATIONS
- ALL DIMENSIONS ARE IN METRES UNLESS STATED OTHERWISE

NOTES
 THE SITE BOUNDARY IS OUTLINED IN BLUE. THE BUILDING AND FIELDS FOR GROUND-MOUNT ARE OUTLINED IN RED.
 Contains OS data © Crown copyright and database rights 2022. Supplied by <https://syzygyplan.co.uk> digital mapping is licensed Ordnance Survey Partner (100053143).

PROJECT	Horizon Hurley	DRG NO.	1
ADDRESS	Horizon Hurley, Honey Lane, Maidenhead, G18 2SU	REVISION	V2
TITLE	Location Plan	DRAWN BY	HC
		CHECKED BY	-
		APPROVED	-
		SCALE	1:600 @A0
		ISSUED	-

SYZYGY
 THE FUTURE | REALIGNED

SYZYGY CONSULTING LIMITED
 UNIT 55
 HATCHERS YARD,
 9 TANNER STREET
 LONDON
 SE1 3LE
 T: 44 (0) 20 7182 8240
 www.syzygyconsulting.co.uk

Appendix B - 22/02095/FULL: Horizon, Honey Lane, Maidenhead

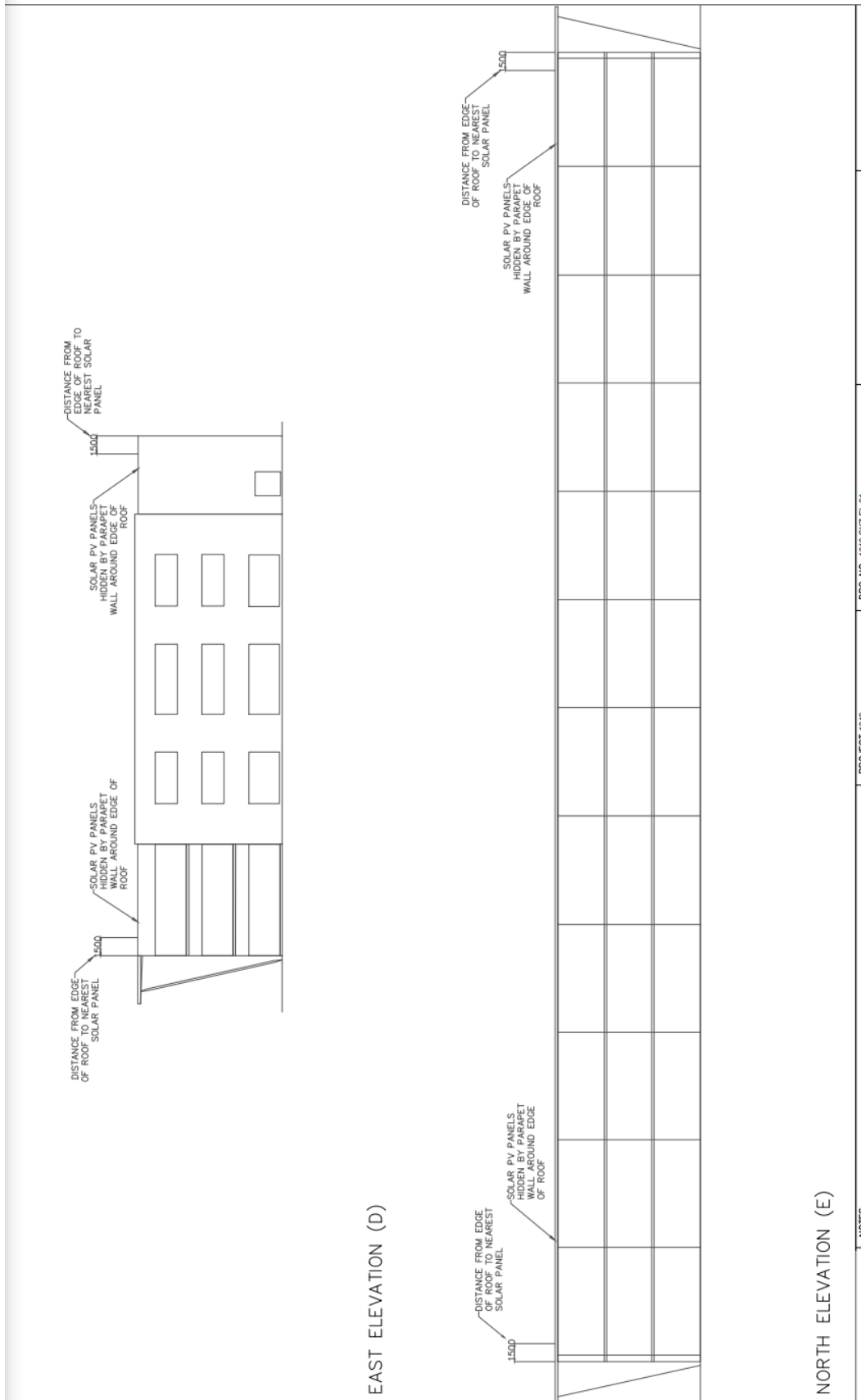


<p>USE MARKED DIMENSIONS AND DIMENSIONS IN THIS DRAWING IS TO BE READ IN CONJUNCTION WITH ALL NOTES, SPECIFICATIONS AND SPECIFICATIONS. ALL DIMENSIONS ARE IN MILLIMETERS UNLESS STATED OTHERWISE</p>		<p>NOTES</p> <p>No Modules : 2,512 panels (maximum deployable) Size: 1,325 kWp (assuming 400W-rated panels) Orientation: 10 deg & 25 deg (pitched) Type: roof-mounted & ground-mounted</p>	<p>PROJECT Horizon Hurley ADDRESS Horizon Hurley, Honey Lane, Maidenhead, SL6 6PU TITLE Desktop Solar PV Layout</p>	<p>DRG NO. 1</p>		<p>SYZYGY CONSULTING LIMITED 15 GARDENS GROUNDS LONDON SE1 3JA T: +44 (0) 20 7183 8040 www.syzygyconsulting.eu</p>	
				<p>REVISION 0 SCALE 1:450 @A0</p>	<p>DRAWN BY HC ISSUED 28/07/2022</p>	<p>CHECKED BY - APPROVED -</p>	<p>SYZYGY THE FUTURE REALIGNED</p>

Appendix B - 22/02095/FULL: Horizon, Honey Lane, Maidenhead



Appendix B - 22/02095/FULL: Horizon, Honey Lane, Maidenhead





1. Ground mounting T-Rack system -
One footed elevated mounting



GROUND MOUNTING T-RACK SYSTEM

7

System components | Ground mounting T-Rack system



Ground post foundation –
HEA profile



material: galvanized steel

mounting rail K2 CrossRail 90



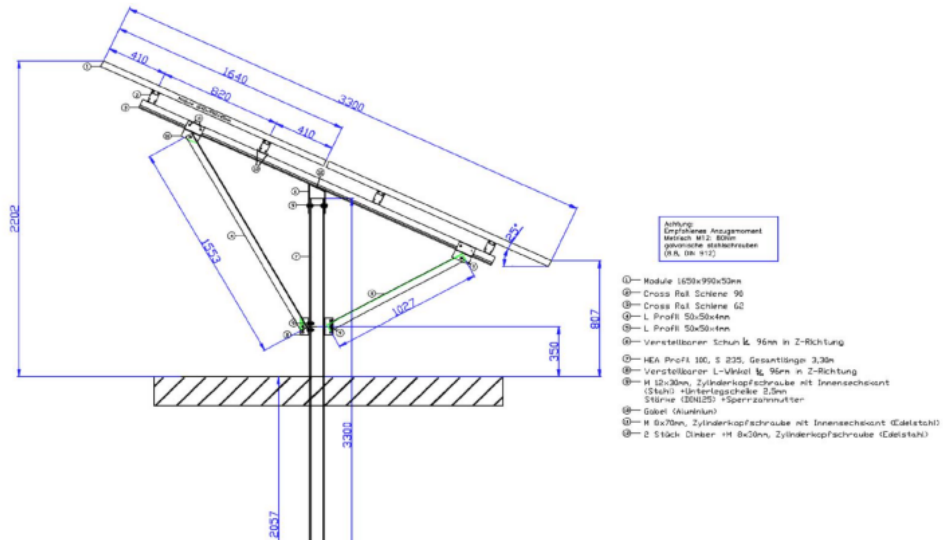
material: aluminum

GROUND MOUNTING T-RACK SYSTEM

8



→ Structure of the T-Rack system



GROUND MOUNTING T-RACK SYSTEM

9



→ Table unit with 5 pilar sections



GROUND MOUNTING T-RACK SYSTEM

10



▸ Ground mounting system table - T-Rack system

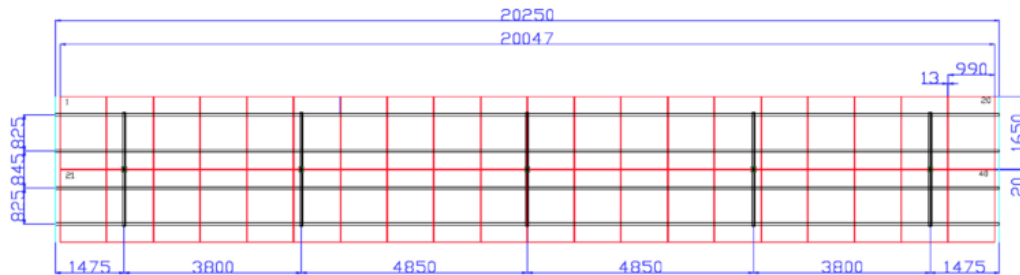


Table top view with modules 1650x990x50mm

middle field span: 4,85m

boundary field span: 3,80m

cantilever arm: 1,475m

Vertex

BACKSHEET MONOCRYSTALLINE MODULE

PRODUCT: TSM-DE20

PRODUCT RANGE: 585-605W

605W

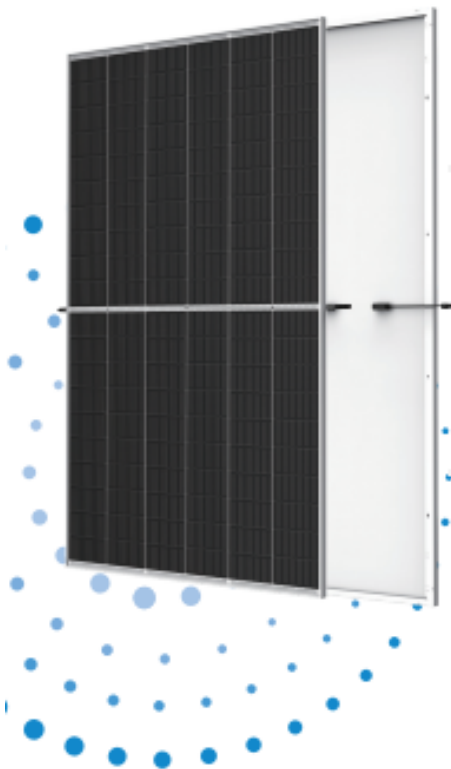
MAXIMUM POWER OUTPUT

0~+5W

POSITIVE POWER TOLERANCE

21.4%

MAXIMUM EFFICIENCY



High customer value

- Lower LCOE (Levelized Cost Of Energy), reduced BOS (Balance of System) cost, shorter payback time
- Lowest guaranteed first year and annual degradation;
- Designed for compatibility with existing mainstream system components



High power up to 605W

- Up to 21.4% module efficiency with high density interconnect technology
- Multi-busbar technology for better light trapping effect, lower series resistance and improved current collection



High reliability

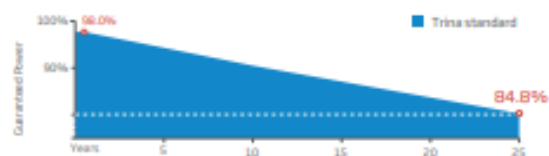
- Minimized micro-cracks with innovative non-destructive cutting technology
- Ensured PID resistance through cell process and module material control
- Resistant to harsh environments such as salt, ammonia, sand
- Mechanical performance up to 5400 Pa positive load and 2400 Pa negative load



High energy yield

- Excellent IAM (Incident Angle Modifier) and low irradiation performance, validated by 3rd party certifications
- The unique design provides optimized energy production under inter-row shading conditions
- Lower temperature coefficient (-0.34%) and operating temperature

Trina Solar's Backsheet Performance Warranty



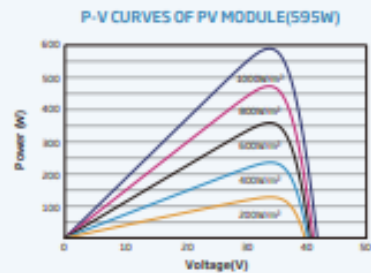
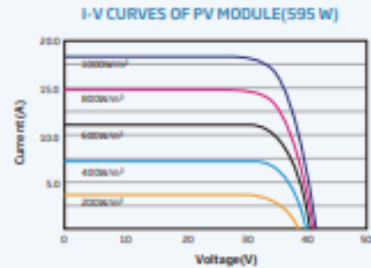
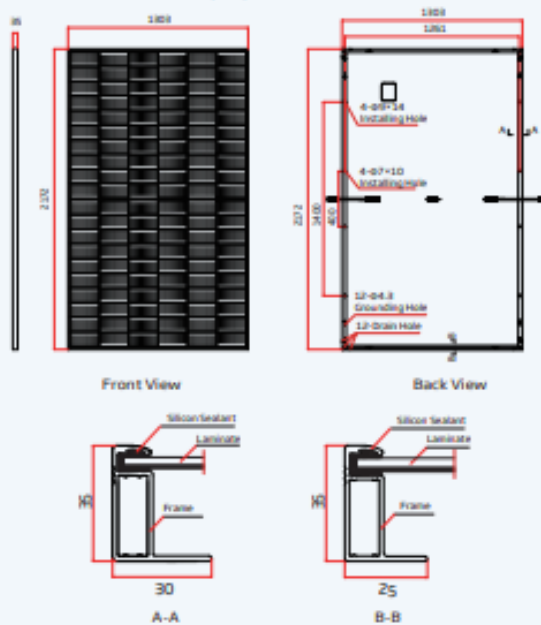
Comprehensive Products and System Certificates



IEC61215/IEC61730/IEC61701/IEC62716/UL61730
ISO 9001: Quality Management System
ISO 14001: Environmental Management System
ISO14064: Greenhouse Gases Emissions Verification
ISO45001: Occupational Health and Safety Management System

Trinasolar

DIMENSIONS OF PV MODULE(mm)



ELECTRICAL DATA (STC)

Peak Power Watts- P_{max} (W)*	595	590	595	600	605
Power Tolerance- P_{max} (W)	0 ~ +5				
Maximum Power Voltage- V_{mp} (V)	33.8	34.0	34.2	34.4	34.6
Maximum Power Current- I_{mp} (A)	17.31	17.35	17.40	17.44	17.49
Open Circuit Voltage- V_{oc} (V)	40.9	41.1	41.3	41.5	41.7
Short Circuit Current- I_{sc} (A)	18.27	18.42	18.47	18.52	18.57
Module Efficiency- η_m (%)	20.7	20.8	21.0	21.2	21.4

STC: Irradiance 1000W/m², Cell Temperature 25°C, Air Mass 1.5. *Measuring tolerance ±1%.

ELECTRICAL DATA (NOCT)

Maximum Power- P_{max} (W)	443	447	451	454	458
Maximum Power Voltage- V_{mp} (V)	31.5	31.7	31.9	32.0	32.2
Maximum Power Current- I_{mp} (A)	14.05	14.09	14.13	14.19	14.22
Open Circuit Voltage- V_{oc} (V)	38.5	38.7	38.9	39.1	39.3
Short Circuit Current- I_{sc} (A)	14.91	14.95	14.99	14.92	14.96

NOCT: Irradiance at 800W/m², Ambient Temperature 25°C, Wind Speed 1m/s.

MECHANICAL DATA

Solar Cells	Monocrystalline
No. of cells	120 cells
Module Dimensions	2172*1302*35 mm (85.51*51.30*1.38inches)
Weight	20.6 kg (45.5 lb)
Glass	3.2 mm (0.126 inches), High Transmittance, All-Weather, Heat-Strengthened Glass
Encapsulant material	EVA/POE
Backsheet	White
Frame	35mm(1.38 inches) Anodized Aluminium Alloy
J-Box	IP68 rated
Cables	Photovoltaic Technology Cable 4.0mm ² (0.006 inches ²), Pitch: 350/090 mm (13.78/11.82 inches) Length can be customized
Connector	MC4 EV02 / TS4*

*Please refer to product datasheet for specified connector.

TEMPERATURE RATINGS

NOCT (Nominal Operating Cell Temperature)	42°C (107°F)
Temperature Coefficient of P_{max}	-0.34%/°C
Temperature Coefficient of V_{oc}	-0.25%/°C
Temperature Coefficient of I_{sc}	0.04%/°C

MAXIMUM RATINGS

Operational Temperature	-40 ~ +85°C
Maximum System Voltage	1500V DC (IEC)
	1500V DC (UL)
Max Series Fuse Rating	30A

WARRANTY

12 year Product Workmanship Warranty
25 year Power Warranty
2% first year degradation
0.55% Annual Power Attenuation

(Please refer to product warranty for details)

PACKAGING CONFIGURATION

Modules per box: 26 pieces
Modules per 40' container: 558 pieces

Existing elevations

